

Jeron

Industrial Wall Pack Light



Features

- CCT and wattage tunable available
- Microwave motion, photocell sensor / Emergency battery backup optional
- Unique design, strong extruded lamp body



Wall



IK Rating
IK08



IP Rating
IP65



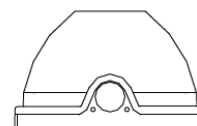
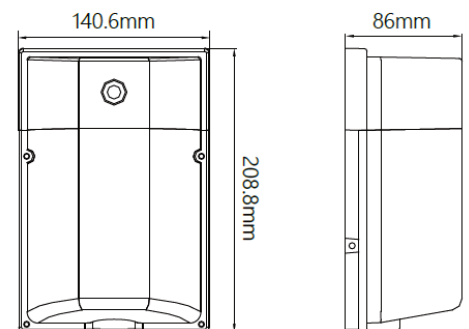
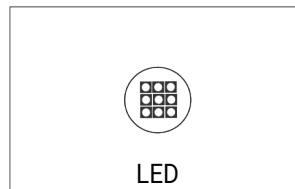
Standard Warranty

TECHNICAL DATA SHEET - JERON - 19093 - INDUSTRIAL WALL PACK LIGHT



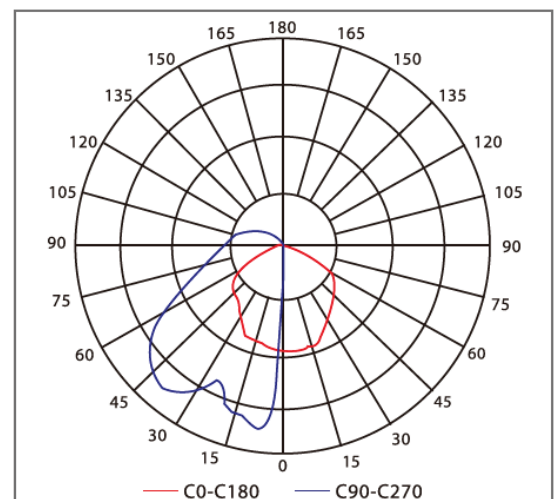
TECHNICAL DATA

Product Data	Wall Pack Light
Lamp Type	Lumileds
Wattage	25/15/10/8W (Tunable)
Color Temperature	3000K/4000K/5000K (Tunable)
Rated Luminaire Efficiency	130lm/W
IP Rating	65
Beam Angle	115°×100°
Voltage	AC120-277V
Frequency Range	50-60 Hz
Power Efficiency	>90%
Total Harmonic Distortion	<15%
CRI	Ra>70
Power Factor	>0.9
Safety Class	Class II
Operating Temperature	-40°C ~ +40°C
Material	Die-cast Aluminum+Frosted PC Cover
Finish	Black
Life Span	50,000 Hours(Ta=30°C@L80)
Warranty	5 Years
Applications	Warehouse, Industrial, etc.



TECHNICAL OPTIONS

Finish	Bronze/White Customized (Optional)
Control	Switchable, TRIAC, 1-10V, DALI, 0-10V
Optional	Microwave sensor, photocell sensor / Emergency battery backup



TECHNICAL DATA SHEET - JERON - 19093 - INDUSTRIAL WALL PACK LIGHT

FEATURES

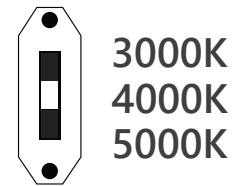
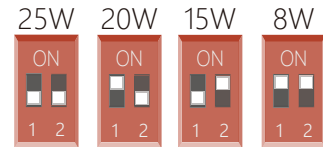
Stronger Housing with Good Heat Dissipation

Photocell

Housing
High Quality Die-casting
Aluminum Shell
Strong and Durable.

The position of Dip switch
Wattage&CCT switched all in one

3030LEDs, up to 130LM/W



The PC Lens Light
Transmittance Is Over 90%

Driver Inside

Mounting Plate

Accessories



Surge Protection



Photocell



Multiple Pluggable Microwave Motion
Sensor Optional (Z10, Zhaga, AUX etc)