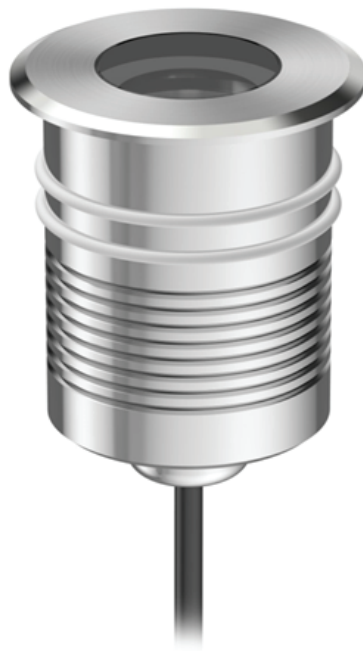


## Ela

### Underwater Light




### Features

- Front Cover&Housing:Stainless steel SUS 316L#
- Lens:Optical lens, efficiency $\geq$ 85%
- Driver:Constant voltage input.Constant current output.
- Glass:Step tempered glass.
- Mounting sleeve:ABS

 **Recessed**

 **IP Rating**  
IP68

 **IK Rating**  
IK06

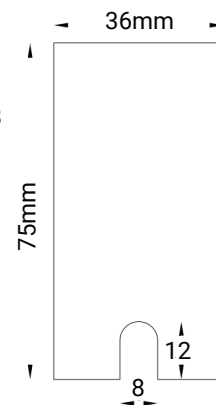
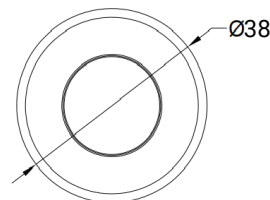
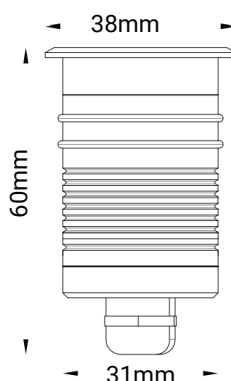
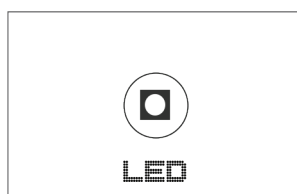
 **Standard Warranty**  
5 years warranty

## TECHNICAL DATA SHEET - ELA - 19091 - UNDERWATER LIGHT



### TECHNICAL DATA

<b>Product Data</b>	Underwater Light
<b>Lamp Type</b>	CREE LED
<b>Wattage</b>	2W
<b>Color Temperature</b>	3000K
<b>Rated Luminaire Luminous Flux</b>	200lm
<b>Rated Luminaire Efficiency</b>	100lm/W
<b>IP Rating</b>	68
<b>Beam Angle</b>	25°
<b>Voltage</b>	DC24V
<b>Frequency Range</b>	50-60 Hz
<b>CRI</b>	Ra>80
<b>Power Factor</b>	>0.9
<b>Output Current</b>	60mA
<b>Operating Temperature</b>	-20°C ~ +50°C
<b>Safety Class</b>	III
<b>IK Rating</b>	06
<b>SDCM</b>	< 3 MacAdam
<b>Material</b>	Hard chrome-plated stainless steel #316
<b>Finish</b>	Chrome
<b>Life Span</b>	50,000 Hours
<b>Warranty</b>	5 Years
<b>Applications</b>	Outdoor, Pool, Fountains, etc.



### TECHNICAL OPTIONS

<b>Color Temperature</b>	4000K-6000K, RGB
<b>Beam Angle</b>	12°/40°/60°
<b>Optional accessories</b>	Honeycomb louver/Half shading
<b>Control</b>	TRIAC, DALI, 0-10V

