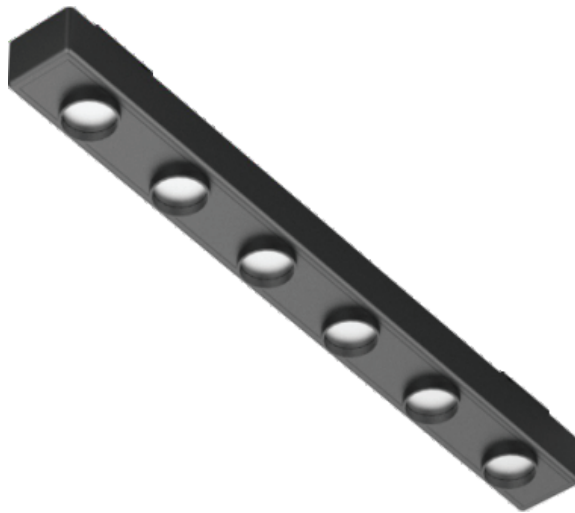


Polo

Surface Mounted Magnetic Grill Track



Features

- Anti-glare design
- Exquisite structure, high-grade appearance
- Low voltage operation to ensure electric shock safety
- High efficacy, high illuminance
- DC24V Safely Input Voltage



Surface Mounted
Magnetic Track



UGR
<13

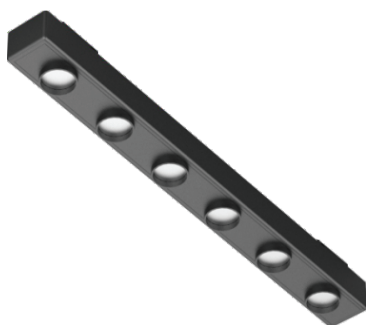


IP Rating
IP20

6
years
warranty

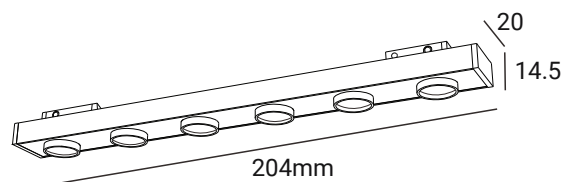
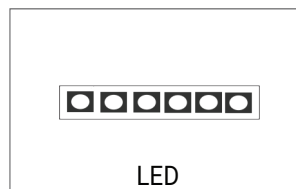
Standard Warranty

TECHNICAL DATA SHEET - POLO - 18975 - SURFACE MOUNTED MAGNETIC GRILL TRACK



TECHNICAL DATA

Product Data	Magnetic Track Light
Lamp Type	BRIDGELUX LED
Wattage	6W
Color Temperature	3000K
Rated Luminaire Luminous Flux	420lm
Rated Luminaire Efficiency	70lm/W
IP Rating	20
Beam Angle	30°
Voltage	DC24V
Frequency Range	50-60 Hz
CRI	Ra>90
Power Factor	>0.9
Operating Temperature	-20°C ~ +45°C
Output Current	250mA
Material	Die cast aluminum body
Finish	Black
Life Span	60,000 Hours
Warranty	6 Years
Applications	Residential, Commercial, Hospitality etc.



TECHNICAL OPTIONS

Wattage	12W / 18W / 24W / 30W
Color Temperature	4000K, 6000K
Finish	White
Control	Switchable/TRIAC/0-10V/Wi-Fi/Bluetooth