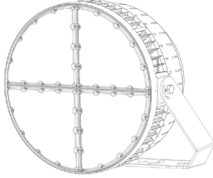


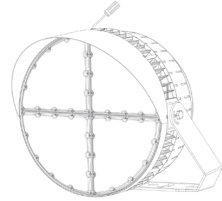
INSTALLATION INSTRUCTION

①



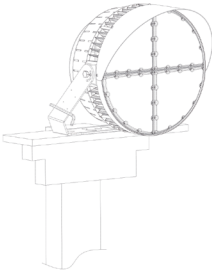
Please take out the fixture from the package.

②



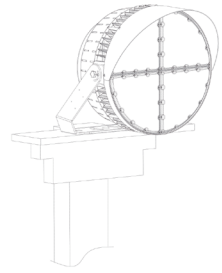
Please use 5pcs M4*8 screws to install the shading board on the fixture.

③



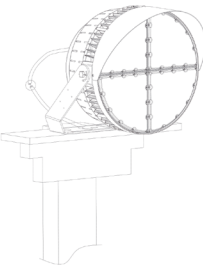
Please install the fixture onto the pole, fasten the screws.

④



Please loosen the screws on the both sides of fixture, adjust the beam angle of fixture.
(Please do not loosen the screws totally)

⑤



Please connect the fixture with AC100-277V electricity.