

### INSTALL INSTRUCTION

(Please read carefully before installation and save )

Please read the instructions which would tell you the way to connect and some matters need attention before installing and using. Take care of the instructions in case you might use it.

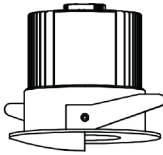
#### Specification

Product: Recessed LED Light  
Voltage: 220-240V 50-60Hz

Accessories: 1. Lamp 2. Installation Instruction

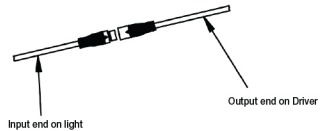
#### Installation Steps

1. Open suitable hole on the ceiling.

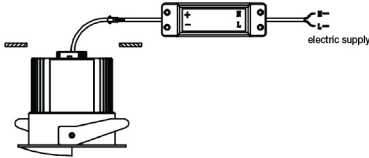


MODEL	CUTOUT

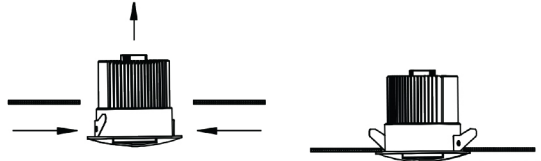
2. Connect the input & output ends as illustrated, the red output wire of driver connecting to the red input wires of lamp. Be sure both ends are locked tightly, to prevent loose or heating at electric terminals.



3. Driver wire connections: directly connect the brown & blue input wires to electric supply (AC220-240V) as illustrated.



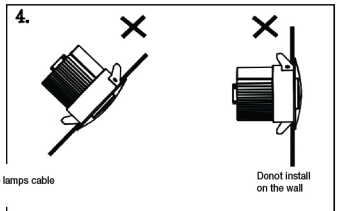
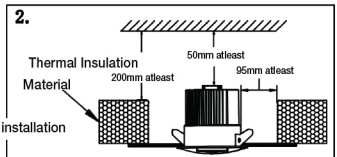
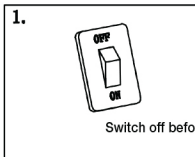
4. Installation way with clips: Press upward the spring clips on both sides by hand at the same time, and push the plate of the lamp into the hole.



Press upward the spring clips on both sides by hand at the same time, and push the plate of the lamp into the hole.

#### Matters Need Attention

1. Use under the indoor conditions and prevent from shock, dust and high temperature, or will easily lead to fire and electric shock.
2. In case of electric shock, please shut off the power before installing, cleaning and fixing.
3. Please make sure the embedded downlight with 95mm draught hole at least. The lamp should be kept at least 500mm from the irradiated object, or will lead to fire and fault.
4. Avoid to cover lamps by thermal insulation material or similar materials at any case.
5. Should not take apart the lamp's internal structure at anytime.
6. Cut off the power when the product works abnormally and contact with our service centre or our specialists.



#### Maintain

In order to use our products effectively, please do an all-around clean every 6 months. You can use hair-dryer or dry brush to get rid of the dust on the surface, then use soft cloth with alcohol to clean the product. Dust not only affect the out looking, but also badly impair the heat dispersion and shorten the life span. Please don't use water, gasoline and Tiana to clean it, or will destruy the lamp or its color. Every 3 or 5 years, please ask the specialists to check the lights and change the broken componenets in case of fire.